

380W x 394 (12ft setback (5deg)) UIUC Conf 1900 S 1st (390@15deg), 1900 S 1st St., Champaign, IL 61820

Shading Heatmap



Shading by Field Segment

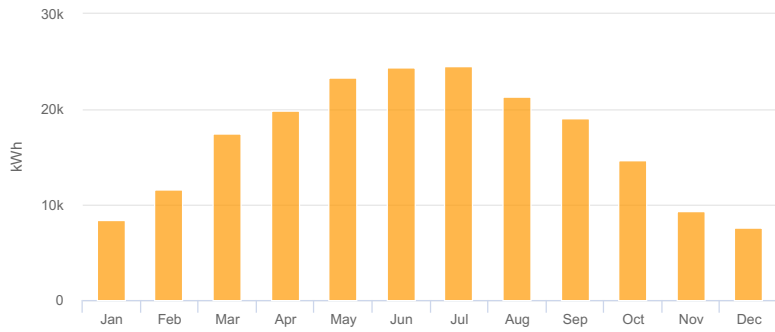
Description	Tilt	Azimuth	Modules	Nameplate	Shaded Irradiance	AC Energy	TOF ²	Solar Access	Avg TSPF ²
Flat Roof	5.0°	165.0°	394	149.7 kWp	1,567.4kWh/m ²	201.6 MWh ¹	89.3%	99.9%	89.1%
Totals, weighted by kWp			394	149.7 kWp	1,567.4kWh/m ²	201.6 MWh	89.3%	99.9%	89.1%

¹ approximate, varies based on inverter performance
² based on location Optimal POA Irradiance of 1,758.6kWh/m² at 35.2° tilt and 183.4° azimuth

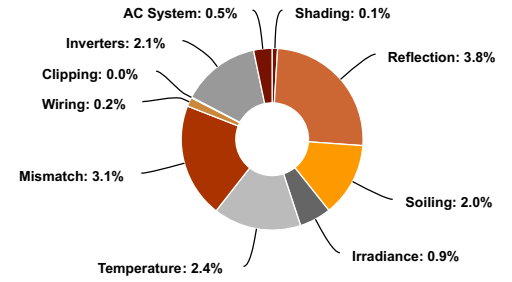
Solar Access by Month

Description	jan	feb	mar	apr	may	jun	jul	aug	sep	oct	nov	dec
Flat Roof	99%	100%	100%	100%	100%	100%	100%	100%	100%	100%	99%	99%
Solar Access, weighted by kWp	99.1%	99.7%	99.9%	100.0%	100.0%	100.0%	100.0%	100.0%	100.0%	99.9%	99.4%	99.1%
AC Power (kWh)	8,454.9	11,600.6	17,426.5	19,830.4	23,397.6	24,360.3	24,566.8	21,277.5	19,109.7	14,619.1	9,340.8	7,645.6

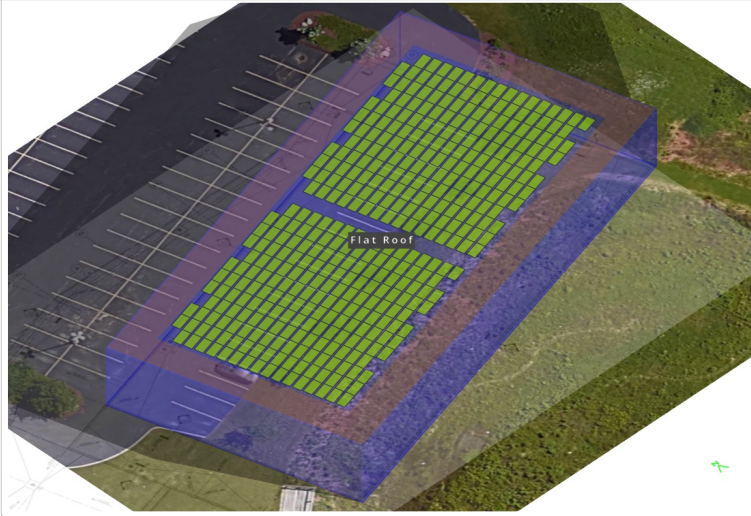
Monthly Production



Sources of System Loss



Southwestern Angle



Southeastern Angle

